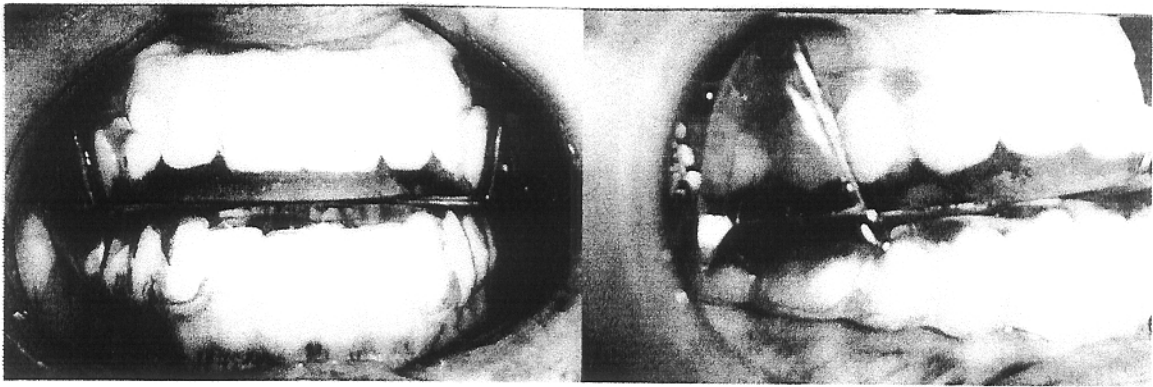


8/27/09. | This appliance has greatly reduced the fatigue I used to feel during the day. It is easy to wear, comfortable and allows me to sleep in whichever position I choose to. Somnomed oral appliance has been comfortable. My energy levels are way up! I wish the initial doctor I saw would have advised the use of this appliance vs. CPAP, which I found intolerable. ES



Notes: Epworth Sleepiness Scale went from 13 to 5  
Apnea/Hypopnea Index went from 27.4 to 1  
Lowest O<sub>2</sub> desaturation 92%

Stephen David Smith, D.M.D.  
Rt. 252 & Waynesborough Rd.  
Paoli, PA 19301-2007  
Phone: (610) 647-2755  
Fax: (610) 647-5304

8/27/09

Somnomed  
Ph: 940-381-5220

OK to put into "Testimonial" to Somnomed ES